



SANTEK
EQUIPMENTS PVT. LTD.

An ISO 9001:2008 Company

 **SANTEK**

50T / 10T

MORE THAN HANDLING EQUIPMENTS



ABOUT COMPANY...

Santek Equipments Pvt Ltd , the company having its own set up in Pune , India having full fledged factory set up with highly skilled manpower to design , fabricate, supply and commissioning of different material handling systems.The company on its expansion stage is committed to give fast services to their clients. Having more than 150 satisfied clients and over 400 successful installations in the various sectors, is the major strength of the company.

Santek Equipments Pvt Ltd is formed with a view to offer turnkey project engineering services in the following fields:

- Designing of projects such as material handling equipments,turnkey projects and tailor made equipments along with complete material handling equipments,systems and plants.
- Manufacturing of cranes for different industries with different varieties.
- Manufacturing of conveyors for various sectors with various types.
- Marketing activities of material handling equipments/systems with latest knowhow.
- Designing and execution of special material handling systems comprising of lifting and conveying.

Santek Equipments Pvt. Ltd. is now trusted organisation in crane industries form more than decade.

PRODUCT RANGE

CRANES

- Double girder EOT cranes of various capacities with variety of features upto 125 Ton capacity & 60.0 mtrs. span.
- Special purpose double girder grabbing cranes with grab buckles with various combinations.
- Single girder/Box girder EOT cranes with various capacities and features.
- Double girder goliath cranes of various capacities for construction, raw material handling etc.
- Single girder goliath cranes of various capacities and various spans with maximum height and different options.
- Wire rope electric hoist from 500 kg capacity to 30 ton capacity with different lifting tackles.
- Economy range of chain electric hoist from 500 kg capacity to 5 ton capacity with option of speeds.
- Various types of underslung and HOT cranes with variable speeds and designs.
- 180 degree and 360 degree revolving JIB cranes ranging from 250 kg capacity to 10 ton capacity.
- Straight / Curved type monorail systems with various options of track.
- Goods lifts / Cage hoists for various floors with different options.

CONVEYORS

- High speed belt conveyors up to 1000 Tons/HR capacity with various speeds and width.
- Single roll/double roll MS/SS screw conveyors-horizontal / inclined.
- Manual /Power operated various roller conveyors with different options.
- Portable belt/Chain conveyors/Stackers.Scraper/Salt conveyors with different attachments.
- Belt/Chain type bucket elevators with various types and speeds.



10 nos. of Symmetrical Cranes with Super Structure



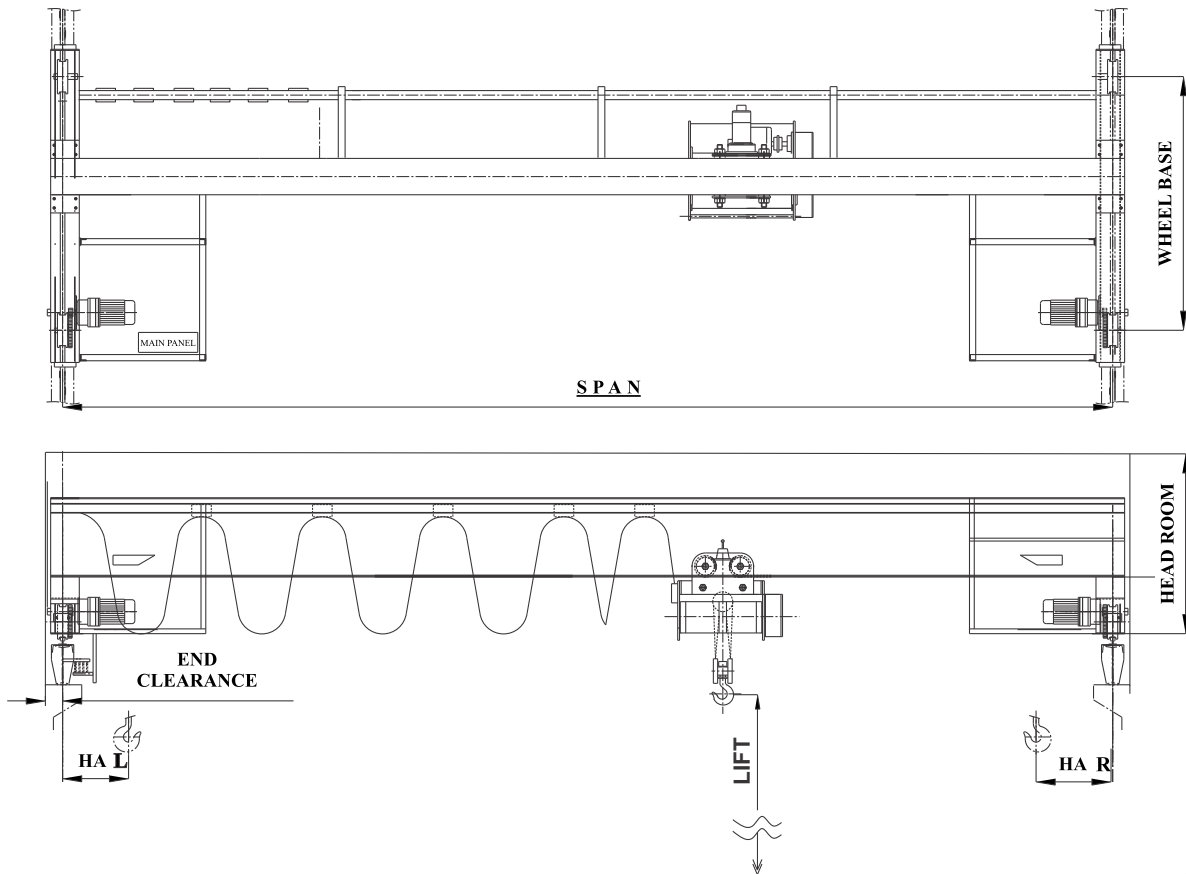
10 Ton Capacity 18 mtr. Span
Single Girder EOT Crane



20 Ton Capacity 35 mtr. Span D/G EOT Cranes



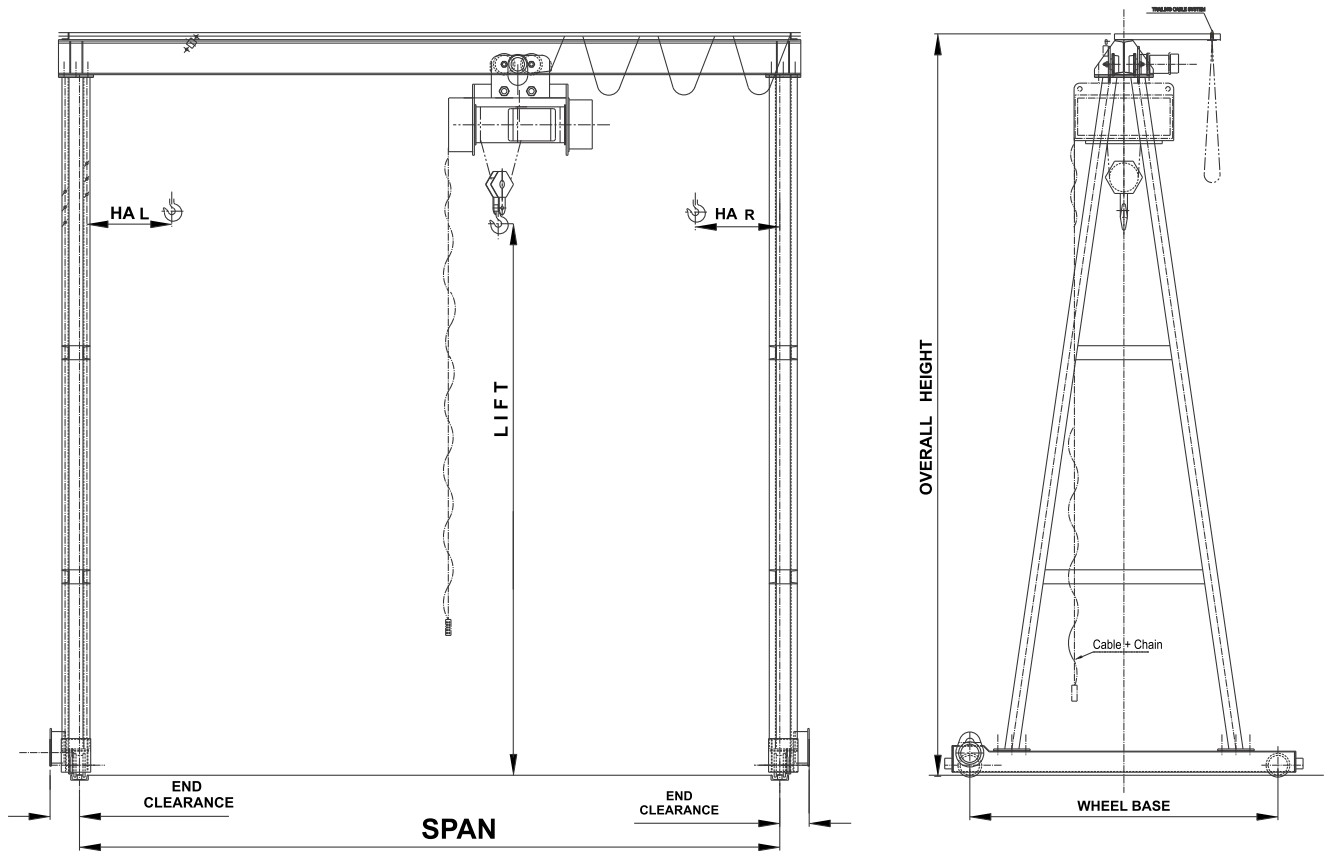
50 Ton / 10 Ton x 21 mtrs span x 12 mtrs. height
Double Girder Goliath Crane



Single Girder EOT Crane

Crane Cap (Ton)	Span (mtrs.)	WB (mm)	HR (mm)	EC (mm)	Wheel Load (Ton)	Crane Weight (Ton)	Crane Cap (Ton)	Span (mtrs.)	WB (mm)	HR (mm)	EC (mm)	Wheel Load (Ton)	Crane Weight (Ton)
1	10	1675	700	200	1.0	2.075	5	10	1675	950	250	3.3	3.1
	12.5	2100	800	200	1.1	2.5		12.5	2100	1000	250	3.4	3.55
	15	2500	900	200	1.3	2.975		15	2500	1100	250	3.7	4.45
	17.5	2925	1050	200	1.4	3.575		17.5	2925	1200	250	3.8	4.9
	20	3350	1200	200	1.6	4.475		20	3350	1300	250	4	5.725
2	10	1675	700	200	1.5	2.25	7.5	10	1675	1000	300	4.7	3.6
	12.5	2100	800	200	1.7	2.675		12.5	2100	1100	300	4.9	4.35
	15	2500	950	200	1.8	3.175		15	2500	1200	300	5.1	5.025
	17.5	2925	1100	200	1.9	3.775		17.5	2925	1300	300	5.3	5.75
	20	3350	1300	200	2.2	4.7		20	3350	1400	300	5.7	6.6
3	10	1675	700	250	2.1	2.425	10	10	1675	1000	300	6	4.075
	12.5	2100	800	250	2.2	2.875		12.5	2100	1150	300	6.2	4.55
	15	2500	950	250	2.4	3.35		15	2500	1250	300	6.4	5.3
	17.5	2925	1150	250	2.5	3.975		17.5	2925	1400	300	6.7	6.575
	20	3350	1300	250	2.8	4.9		20	3350	1500	300	6.9	7.125

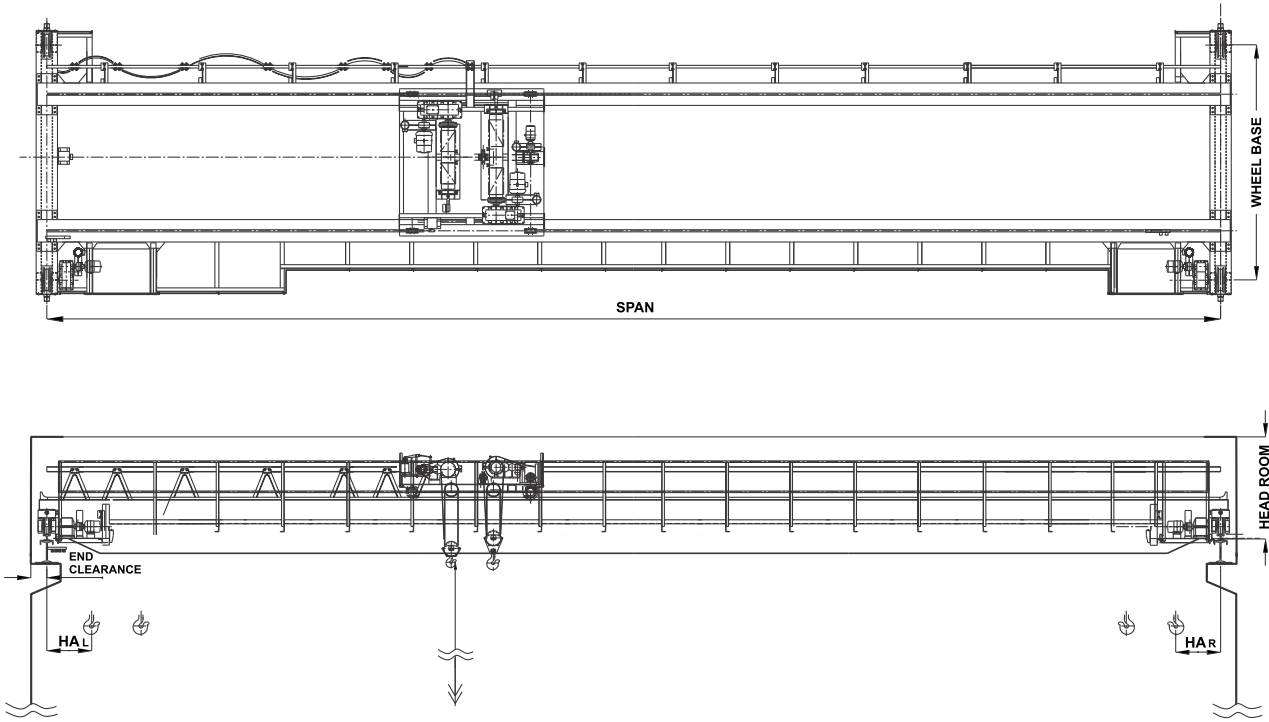
- Notes :**
- All Cranes are with standard 6 mtrs. Lift, dimensions & weights are approximate & may change as per actual design, parameters & sizes.
 - Capacity - Safe working load to be lifted
 - Span - Distance between rail centers
 - WB - Wheel Base
 - HR - Minimum Head Room Required
 - EC - Minimum End Clearance



Single Girder Goliath Crane

Crane Cap (Ton)	Span (mtrs.)	WB (mm)	EC (mm)	Overall Crane Height (mm)	Wheel Load (Ton)	Crane Weight (Ton)	Crane Cap (Ton)	Span (mtrs.)	WB (mm)	EC (mm)	Overall Crane Height (mm)	Wheel Load (Ton)	Crane Weight (Ton)
1	10	2900	200	7236	1.6	4.4	5	10	3200	250	7770	4	5.875
	12.5	2900	200	7336	1.7	4.8		12.5	3200	250	7990	4.2	6.4
	15	2900	200	7436	1.8	5.3		15	3200	250	8090	4.4	7.15
	17.5	2925	200	7536	2	5.9		17.5	3200	250	8112	4.6	7.9
	20	3350	200	7736	2.2	6.9		20	3350	250	8272	4.8	8.875
2	10	3000	200	7388	2.2	4.7	7.5	10	3300	300	8282	5.5	7
	12.5	3000	200	7488	2.3	5.2		12.5	3300	300	8364	5.7	7.65
	15	3000	200	7588	2.4	5.75		15	3300	300	8446	6.0	8.425
	17.5	3000	200	7688	2.6	6.3		17.5	3300	300	8504	6.1	9.075
	20	3350	200	7888	2.8	7.325		20	3350	300	8606	6.6	10.5
3	10	3100	250	7568	2.8	5.1	10	10	3300	300	8364	6.9	7.55
	12.5	3100	250	7668	2.9	5.6		12.5	3300	300	8404	7.1	8.1
	15	3100	250	7768	3.1	6.025		15	3300	300	8544	7.2	8.725
	17.5	3100	250	7868	3.2	6.7		17.5	3300	300	8606	7.7	10.25
	20	3350	250	8068	3.5	7.75		20	3350	300	8626	7.8	11

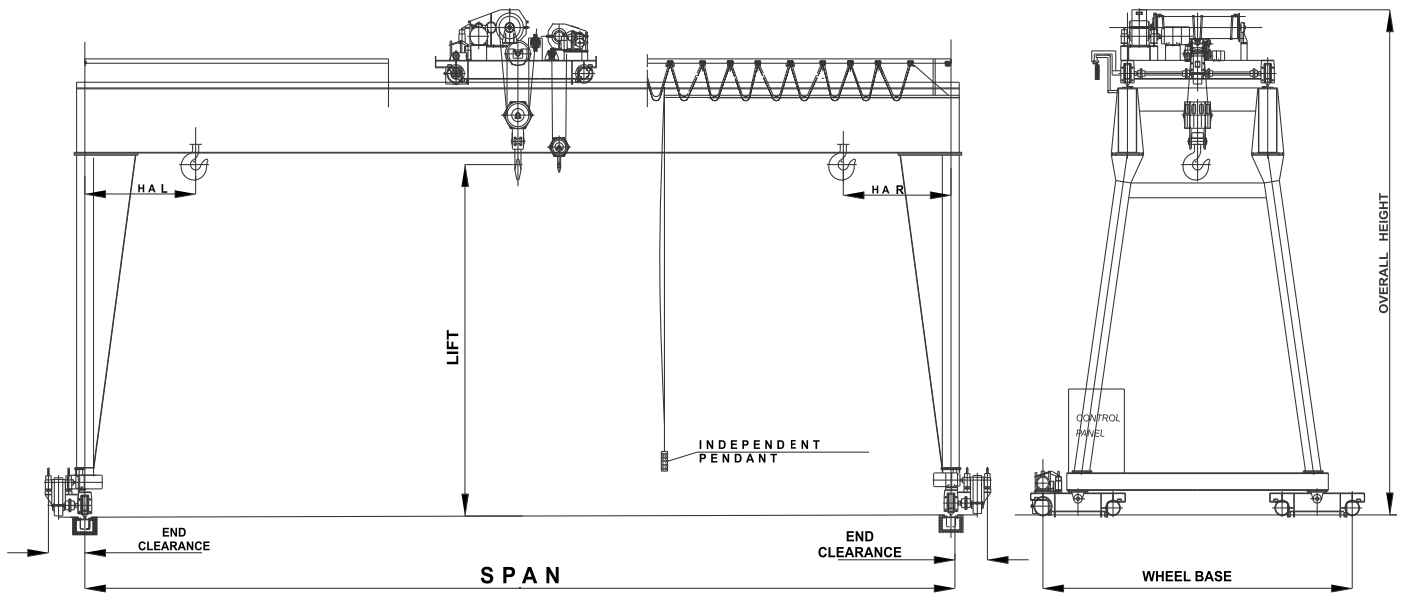
- Notes :**
- All Cranes are with standard 6 mtrs. Lift, dimensions & weights are approximate & may change as per actual design, parameters & sizes.
 - Capacity - Safe working load to be lifted
 - Span - Distance between rail centers
 - WB - Wheel Base
 - HR - Minimum Head Room Required
 - EC - Minimum End Clearance



Double Girder EOT Crane

Crane Cap (Ton)	Span (mtrs.)	WB (mm)	HR (mm)	EC (mm)	Wheel Load (Ton)	Crane Weight (Ton)	Crane Cap (Ton)	Span (mtrs.)	WB (mm)	HR (mm)	EC (mm)	Wheel Load (Ton)	Crane Weight (Ton)
10	12.5	3600	1500	250	7.7	9.85	30	12.5	5175	1850	350	22.5	17.5
	15	3775	1500	250	8.1	11		15	5200	1850	350	22.5	21
	17.5	3775	1500	250	8.5	12.5		17.5	5225	1850	350	23	22.5
	20	3800	1550	250	9.2	15.5		20	5225	1850	350	24	25.75
	22.5	3800	1550	250	9.4	16.25		22.5	5300	1850	350	25	32
	25	3825	1550	250	12.5	18.75		25	5400	1850	350	25	32.25
15	12.5	4200	1650	250	12.5	12.25	35	12.5	5175	1950	350	25	19.5
	15	4200	1650	250	12.5	15		15	5200	1950	350	25	21.75
	17.5	4250	1650	250	12.5	15.75		17.5	5225	1950	350	26	25.25
	20	4275	1650	250	15	18		20	5225	2050	350	27.5	28.75
	22.5	4300	1650	250	15	20.75		22.5	5300	2050	350	27.5	31.75
	25	4300	1650	250	15	22.75		25	5400	2050	350	30	35.75
20	12.5	4450	1650	300	15	14	40	12.5	4425	2050	400	15	20.5
	15	4450	1650	300	15	15		15	4425	2050	400	15	22.5
	17.5	4450	1650	300	15	17.25		17.5	4575	2050	400	15.5	26.25
	20	4500	1650	300	17.5	21.25		20	4675	2050	400	16	29.5
	22.5	4525	1650	300	17.5	22		22.5	4675	2050	400	16	33
	25	4725	1650	300	17.5	26.75		25	4675	2050	400	17.5	39.75
25	12.5	5150	1850	300	17.5	16.75	50	12.5	4750	2100	400	17.5	23
	15	5150	1850	300	20	19		15	4750	2100	400	17.5	26
	17.5	5200	1850	300	20	23		17.5	4850	2100	400	18.5	29.75
	20	5200	1850	300	20	25		20	5050	2150	400	18.5	34.25
	22.5	5225	1850	300	22.5	28		22.5	5150	2150	400	20	40
	25	5400	1850	300	22.5	34.75		25	5150	2150	400	20	43.75

- Notes :**
- All Cranes are with standard 8 mtrs. Lift, dimensions & weights are approximate & may change as per actual design, parameters & sizes.
 - Capacity - Safe working load to be lifted
 - Span - Distance between rail centers
 - WB - Wheel Base
 - HR - Minimum Head Room Required
 - EC - Minimum End Clearance
 - From 10T to 35T - Long travel wheels are 4 nos.
 - From 40T to 50T - Long travel wheels are 8 nos.

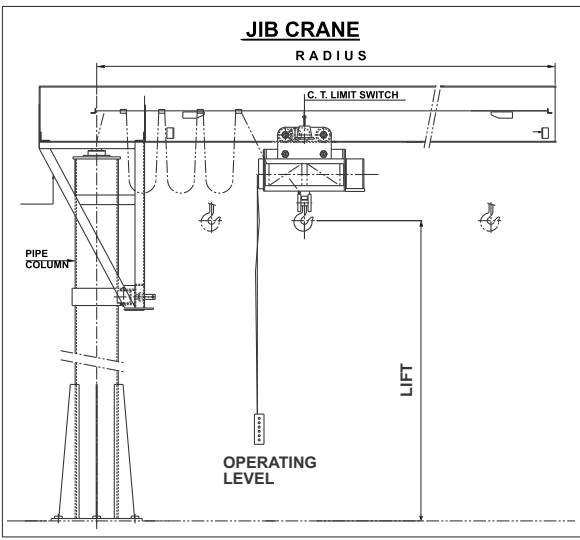


Double Girder Goliath Crane

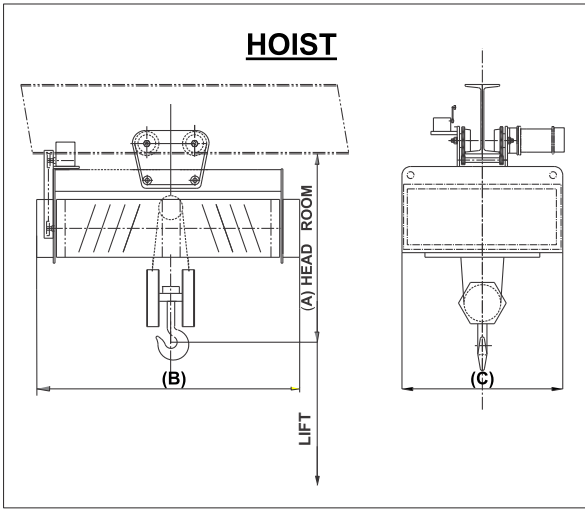
Crane Cap (Ton)	Span (mtrs.)	WB (mm)	EC (mm)	Overall Crane Height (mm)	Wheel Load (Ton)	Crane Weight (Ton)	Crane Cap (Ton)	Span (mtrs.)	WB (mm)	EC (mm)	Overall Crane Height (mm)	Wheel Load (Ton)	Crane Weight (Ton)
10	12.5	4050	350	10025	8.4	12.75	30	12.5	5675	450	10900	22.5	21.75
	15	4125	350	10025	8.9	14.25		15	5700	450	10900	22.5	24.25
	17.5	4200	350	10025	9.3	15.75		17.5	5700	450	10900	25	28.5
	20	4200	350	10025	9.8	17.75		20	5700	450	10900	25	31.25
	22.5	4225	350	10025	12.5	20.5		22.5	5750	450	10900	27.5	36.5
	25	4225	350	10025	12.5	23.25		25	5925	450	10900	27.5	43.25
15	12.5	4600	350	10475	12.5	15	35	12.5	5675	450	11100	25	23.75
	15	4600	350	10475	12.5	17.25		15	5700	450	11100	27.5	27.75
	17.5	4700	350	10475	15	20.5		17.5	5700	450	11100	27.5	30
	20	4700	350	10475	15	22		20	5700	450	11100	27.5	34.25
	22.5	4800	350	10475	15	24.25		22.5	5750	450	11100	30	40.75
	25	4825	350	10475	17.5	29.25		25	5925	450	11100	30	42.75
20	12.5	4800	400	10675	15	17.25	40	12.5	5100	500	11450	15	24.25
	15	4800	400	10675	17.5	20		15	5100	500	11450	15	27
	17.5	4875	400	10675	17.5	21.75		17.5	5100	500	11450	15	32
	20	4875	400	10675	17.5	24.75		20	5100	500	11450	17.5	35.25
	22.5	5225	400	10675	20	30		22.5	5200	500	11450	17.5	39
	25	5225	400	10675	20	32.75		25	5200	500	11450	17.5	43.75
25	12.5	5675	400	10825	20	21.5	50	12.5	5300	500	11500	17.5	26.5
	15	5675	400	10825	20	23		15	5300	500	11500	17.5	31.5
	17.5	5675	400	10825	20	25		17.5	5600	500	11500	20	37.5
	20	5700	400	10825	22.5	27.75		20	5600	500	11500	20	40
	22.5	5700	400	10825	22.5	32.5		22.5	5600	500	11500	20	44.5
	25	5750	400	10825	25	36.5		25	5700	500	11500	20	50.5

- Notes :**
- All Cranes are with standard 8 mtrs. Lift, dimensions & weights are approximate & may change as per actual design, parameters & sizes.
 - Capacity - Safe working load to be lifted
 - Span - Distance between rail centers
 - WB - Wheel Base
 - HR - Minimum Head Room Required
 - EC - Minimum End Clearance
 - From 10T to 35T - Long travel wheels are 4 nos.
 - From 40T to 50T - Long travel wheels are 8 nos.

JIB CRANE - 360 DEGREE ROTATION



Capacity Ton	ARM Radus Mtrs.	Lift Mtrs	Slewing	Approx Crane Weight with hoist in Ton	Capacity Ton	ARM Radus Mtrs.	Lift Mtrs	Slewing	Approx Crane Weight with hoist in Ton
0.5	3.0	3.0	Manual	1.8	3.0	4.0	4.0	Electrical	4.2
	4.0	4.0	Manual	2.2		5.0	5.0	Electrical	4.8
	5.0	5.0	Manual	2.8		6.0	6.0	Electrical	5.7
	6.0	6.0	Manual	3.2		7.0	7.0	Electrical	6.8
1.0	3.0	3.0	Manual	2.2	4.0	4.0	4.0	Electrical	4.5
	4.0	4.0	Manual	2.6		5.0	5.0	Electrical	5.9
	5.0	5.0	Manual	3.2		6.0	6.0	Electrical	6.7
	6.0	6.0	Manual	4.0		7.0	7.0	Electrical	7.6
2.0	3.0	3.0	Manual	2.5	5.0	4.0	4.0	Electrical	5.7
	4.0	4.0	Manual	3.2		5.0	5.0	Electrical	6.5
	5.0	5.0	Manual	3.8		6.0	6.0	Electrical	8.3
	6.0	6.0	Manual	4.5		7.0	7.0	Electrical	9.0



Grab Bucket
4m³ capacity



WIRE ROPE HOIST

Sr.No.	Model No	SE-0.25	SE-0.5	SE-1	SE-1.5	SE-2	SE-3	SE-5	SE-7.5	SE-10	SE-15
1	SAFE WORKING LOAD(KGS)	250	500	1000	1500	2000	3000	5000	7500	10000	15,000
2	No.Of. Falls	2	2	2	2	2	4	4	4	4	4
3	Height Of Lift (Mtrs)	6	6	6	6	6	6	6	6	6	6
4	Hoisting Speed(mtrs/min)	4.5	4.5	4.5	4.5	4.5	3	3	3	3	3
5	Hoisting Motors (HP)	0.5	1	2	3	3	3	5	7.5	10	15
6	Trave Speed(Mtrs.Min)	15	15	15	15	15	15	15	15	15	15
7	Trave Motor(HP)	0.5	0.5	0.5	0.5	0.5	0.75	1	1	1.5	2
8	Min.Radius Negotiated by Hoist in mm	1500	1500	2000	2000	2000	2500	2500	2500	2500	3000
9	Headroom 'A' in mm.	540	880	750	840	860	900	1100	1400	1400	1800
10	Length ' B ' in mm.	550	680	680	770	780	800	1100	1260	1260	1400
11	Width ' C ' in mm.	460	620	620	620	730	770	1080	1080	1200	1200
12	Approx. Net.Weight (Kgs)	100	150	250	300	350	450	900	1000	1110	1400

- The other higher capacity and different span cranes will be quoted as per enquiries.
- The dimensions and weights are approximate and it may change due to continuous improvement in design, at any time.



Factory / Office - GAT No. 304, Ghotawade Phata, Pirangut,
Tal: Mulshi, Dist. Pune - 412108. Maharashtra, India.
Phone No. : 91-020-22923996 / 7 Fax No. 91- 020-22923998
Mobile : 91 - 09422509838, 09422034483,
E-mail: sales@santek.co.in
Website : www.santek.co.in / www.easymaterialhandling.com